



ANNUAL REPORT

July 2024 – June 2025

WHAT WE DO

Mental Health Urgent Care Clinic (MHUCC) is a walk-in clinic for individuals with an urgent mental health need. The MHUCC is a client-centered program that focuses on providing immediate relief to individuals and families in distress. The program intends to avert psychiatric emergency room visits and involuntary hospitalizations. The goals of MHUCC is to foster recovery for individuals and families through the promotion of hope and wellness.

As a walk-in clinic, the MHUCC welcomes anyone experiencing mental health-distress regardless of age and ability to pay. Individuals experiencing non-psychiatric emergencies are encouraged to visit their local emergency room or call 911.



A safe space for individuals and families, peer support and on-the spot counseling



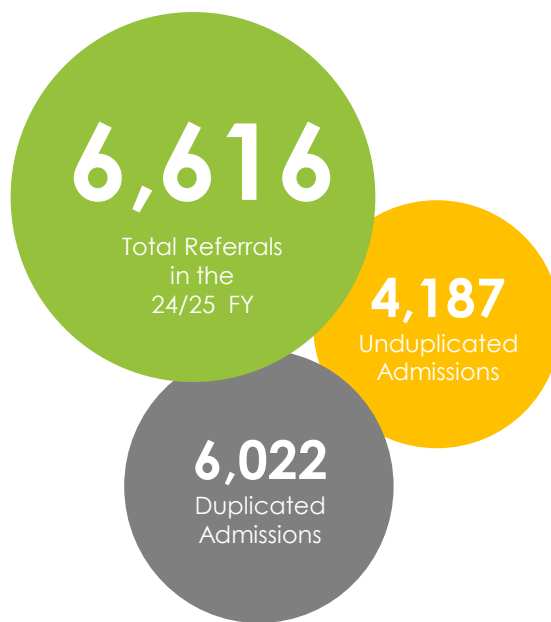
Crisis interventions, psychiatric evaluations and clinical assessments



Referrals and linkages to community resources

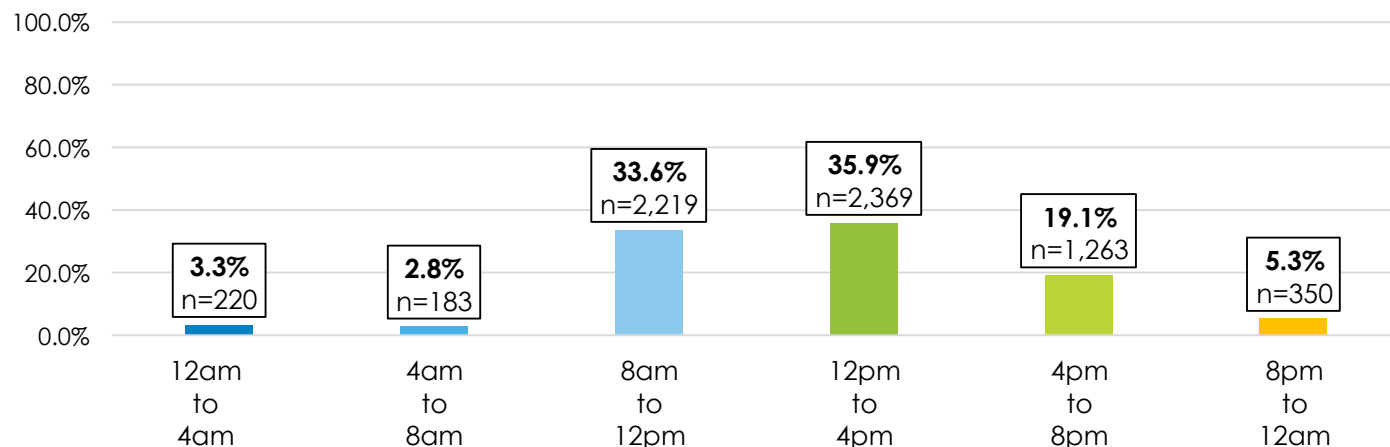


Brief medication management services (excluding controlled substances)



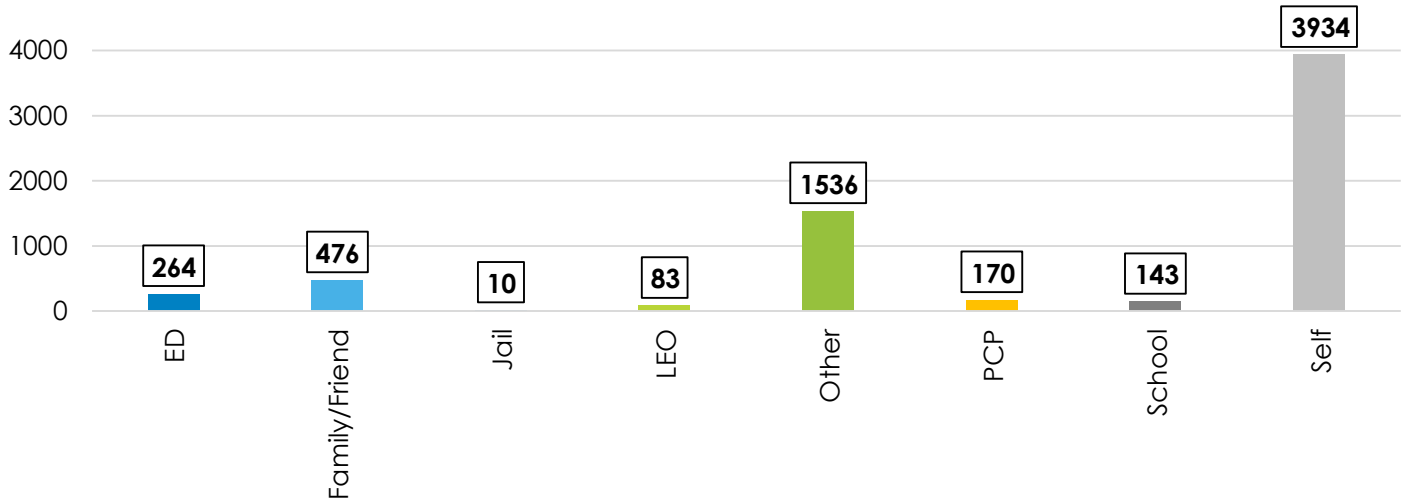
CENSUS & REFERRALS

Referrals by Time

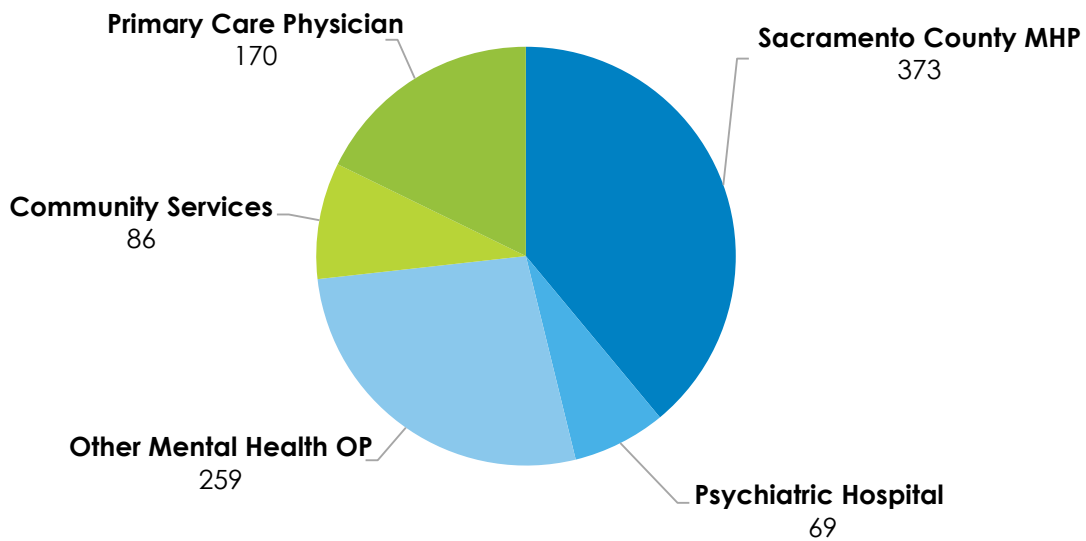


CENSUS & REFERRALS

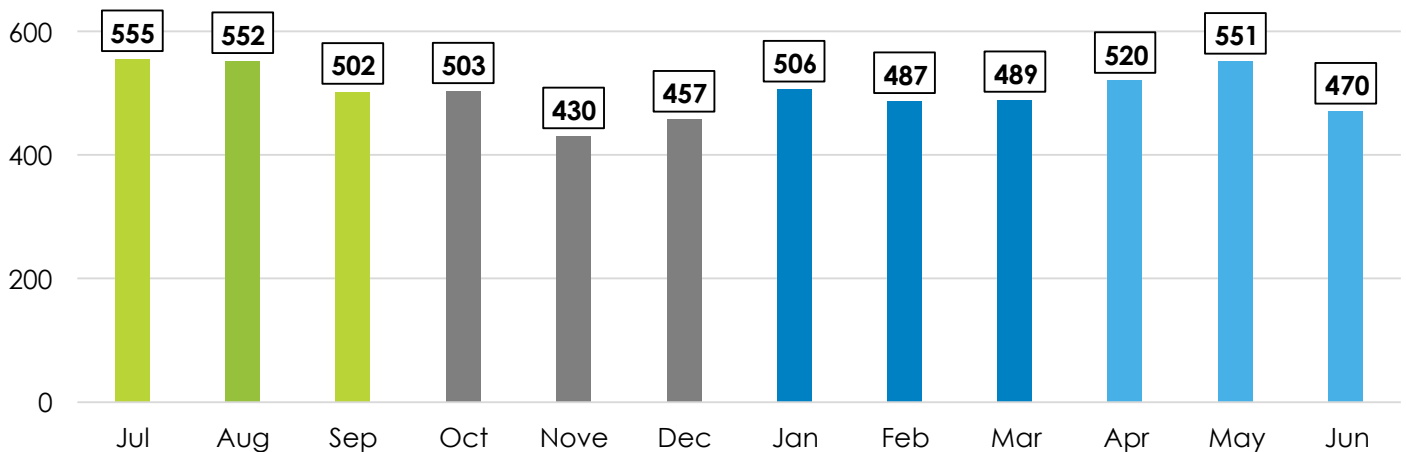
Referral Sources by Type- All Referrals



Top Ten Other Referral Sources by Type

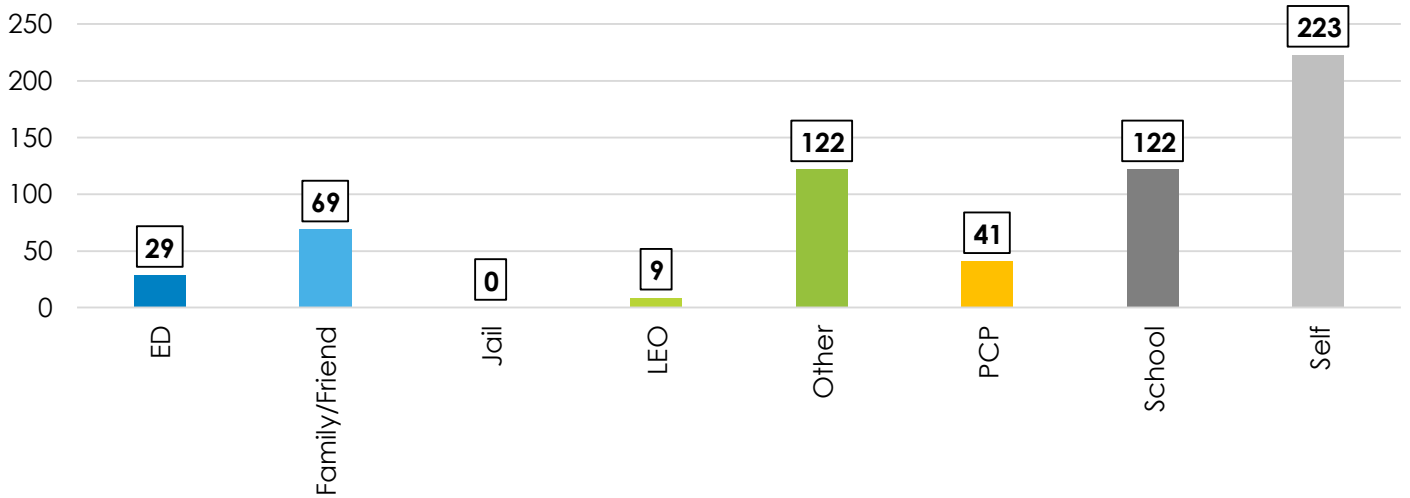


Admissions by Month

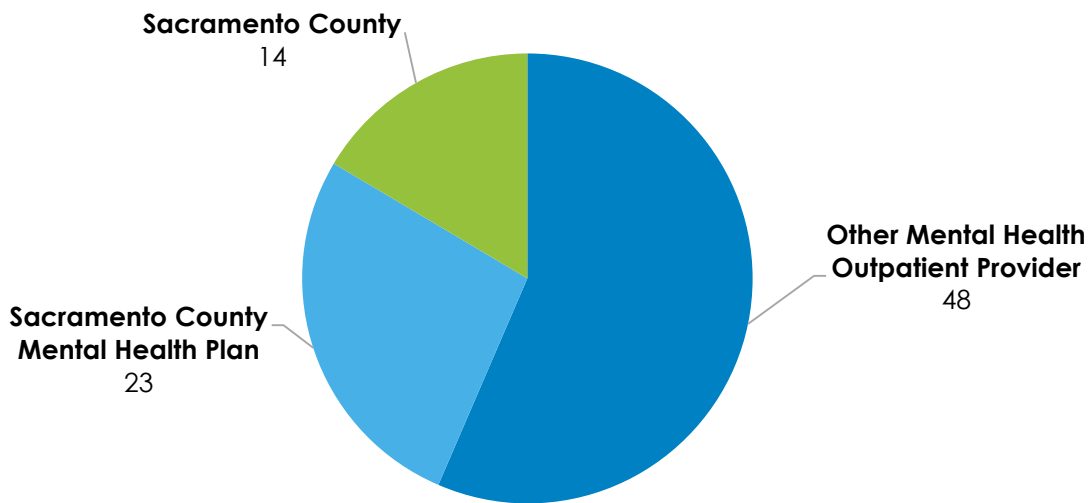


YOUTH CENSUS REFERRALS

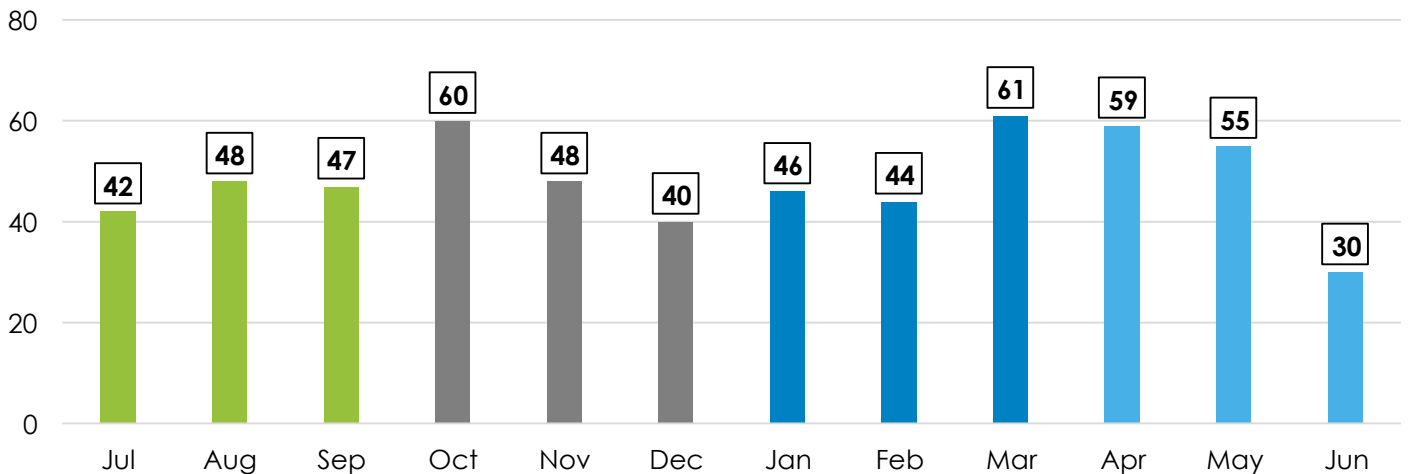
Youth Referrals by Type



Top Three Other Youth Referrals by Type



Youth Admission by Month



DEMOGRAPHICS

All demographics below include all unduplicated admitted clients (N=4,187).

	#
Age Group	
Youth (0-17)	435
Transitional Aged Youth (18-25)	737
Adult (26-59)	2694
Older Adult (60+)	321
Gender Identity	
Female	1898
Genderqueer	15
Male	1909
Non-Binary	89
Other	11
Transgender	43
Unsure/Questioning	2
Declined to state	16
Unknown/Not Asked	204
Sexual Orientation	
Bisexual	321
Gay	92
Heterosexual/Straight	2892
Lesbian	77
Other	1
Unsure/Questioning	29
Declined to State	187
Unknown/Not Asked	588
Primary Language	
Arabic	6
Armenian	3
American Sign Language (ASL)	4
Cantonese	8
Dari	8
English	3777
Farsi	19
Hmong	8
Lao	2
Mandarin	6
Mien	3
Other Non-English	20
Russian	31
Spanish	115
Tagalog	3
Thai	2
Vietnamese	15
Unknown	157

	#
Race	
Alaskan Native/American Indian	59
Asian	332
Black/African American	787
Middle Eastern/North African	3
Multi-Racial	565
Other	460
Pacific Islander	33
White/Caucasian	1493
Declined to state	80
Unknown/Not Asked	80
Ethnicity	
Cambodian	7
Chinese	49
Filipino	102
Guamanian	2
Hawaiian	11
Hispanic or Latino	876
Hmong	23
Japanese	18
Korean	13
Laotian	15
Mexican/Mexican American	83
Mien	10
Multi-Ethnic	169
Not Hispanic or Latino	2216
Other	46
Samoan	3
Vietnamese	39
Unknown/Not Asked	505
Housing Status	
Homeless	374
Housed/No Imminent Risk of Homelessness	3071
Imminent Risk for Homelessness	81
Literally Homeless- Chronic	239
Literally Homeless- Not Chronic	280
Transitional Temporary Housing	57
Unknown	85

YOUTH DEMOGRAPHICS

All demographics below include all unduplicated admitted youth clients (N=435).

	#
Age Group	
3 to 5 years	2
6 to 8 years	30
9 to 11 years	70
12 to 14 years	140
15 to 17 years	193
Gender Identity	
Female	227
Genderqueer	2
Male	173
Non-Binary	11
Other	2
Transgender	4
Declined to state	4
Unknown/Not Asked	4
Sexual Orientation	
Bisexual	40
Gay	6
Heterosexual/Straight	251
Lesbian	7
Unsure/Questioning	11
Declined to state	28
Unknown/Not Asked	92
Race	
Alaskan Native/American Indian	3
Asian	44
Black/African-American	60
Multi-Racial	87
Other	71
Pacific Islander	5
White/Caucasian	131
Declined to state	6
Unknown/Not Asked	28

	#
Ethnicity	
Cambodian	1
Chinese	11
Filipino	16
Hawaiian	2
Hispanic or Latino	111
Hmong	4
Japanese	1
Korean	2
Laotian	1
Mexican/Mexican American	12
Mien	1
Multi-Ethnic	33
Not Hispanic or Latino	169
Other	8
Samoan	1
Vietnamese	3
Unknown/Not Asked	59
Primary Language	
Arabic	2
Cantonese	3
English	392
Farsi	2
Hmong	2
Mandarin	2
Russian	8
Spanish	15
Other Non-English	3
Unknown/Not Asked	6



*Data representative of the 420 youth who had housing data reported.

**Includes transitional temporary housing.

PRIMARY DIAGNOSIS

In the 24/25 FY Mental Health Urgent Care Clinic noted 5480 diagnoses across all admitted clients. The diagnoses below include duplicates as diagnosis can change between visits.

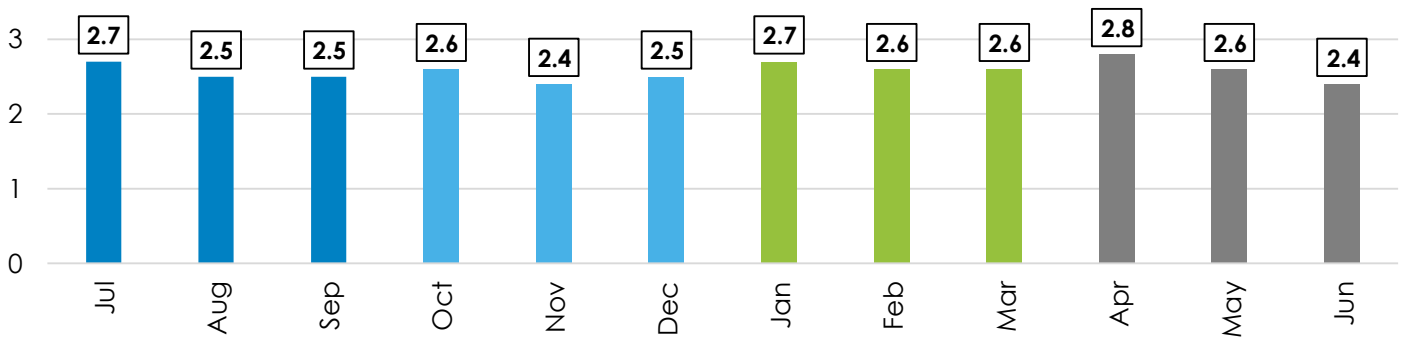
	#	%
Diagnosis Category		
Depressive Disorders	1460	26.64%
Trauma and Stressor Related Disorders	1084	19.78%
Schizophrenia Spectrum and Other Psychotic Disorders	957	17.46%
Bipolar and Related Disorders	510	9.31%
Anxiety Disorders	325	5.93%
Neurodevelopmental Disorders	51	0.93%
Sleep-Wake Disorders	6	0.11%
Obsessive-Compulsive Disorders	5	0.9%
Personality Disorders	5	0.09%
Other Mental Disorders	2	0.04%
Disruptive, Impulse-Control, and Conduct Disorders	1	0.02%
Dissociative Disorders	1	0.02%
Feeding and Eating Disorders	1	0.02%
Neurocognitive Disorders	1	0.02%
Z Code	1071	19.54%
Total	5480	100.0%

Z-CODES

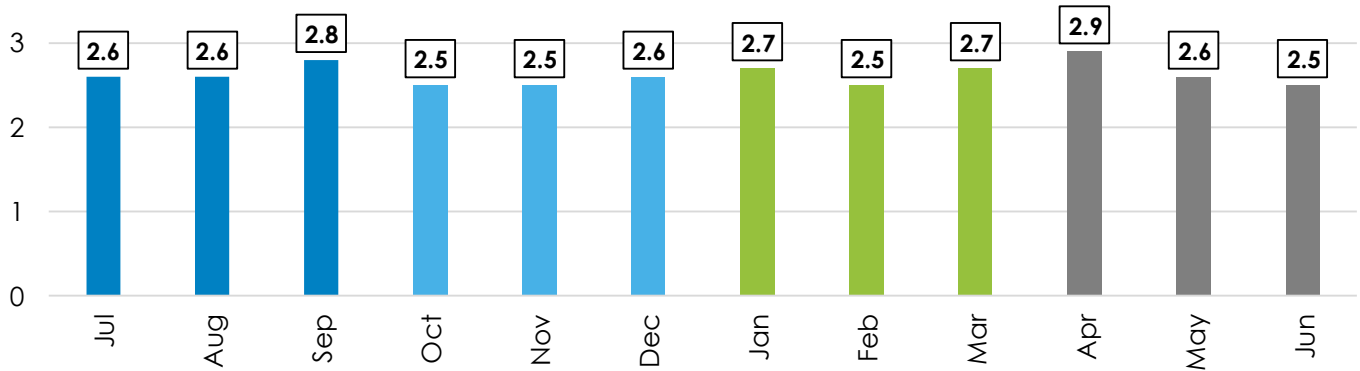
	#	%
Z-Code Category		
Community Support Needs	15	1.4%
Economic	2	0.2%
Educational	8	0.7%
Employment	4	0.4%
Encounter for observation for other suspected diseases and conditions ruled out	894	83.5%
Family Relationships	39	3.6%
Grief	8	0.7%
Housing Support/Homelessness	79	7.4%
Legal	10	0.9%
Medical	2	0.2%
Social Environment	2	0.2%
Unspecified psychosocial needs	8	0.7%
Total	1071	100.0%

LENGTH OF STAY

Average Length of Stay by Month-Admitted Clients Only

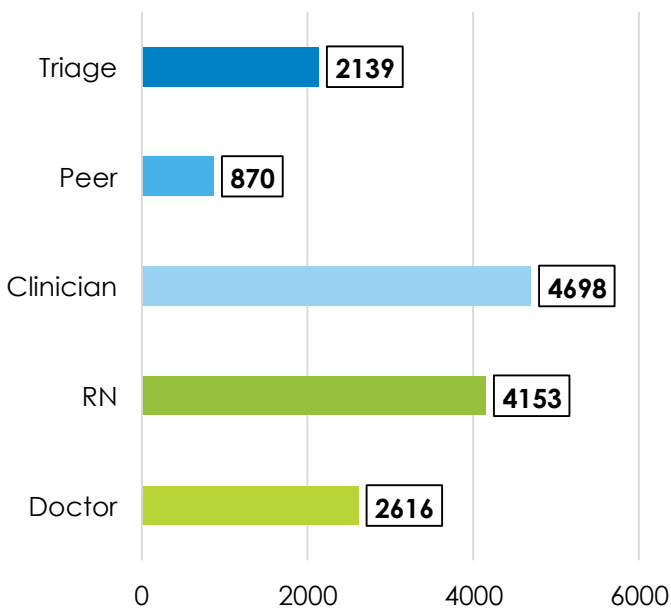


Average Length of Stay by Month- Youth Admitted Clients Only

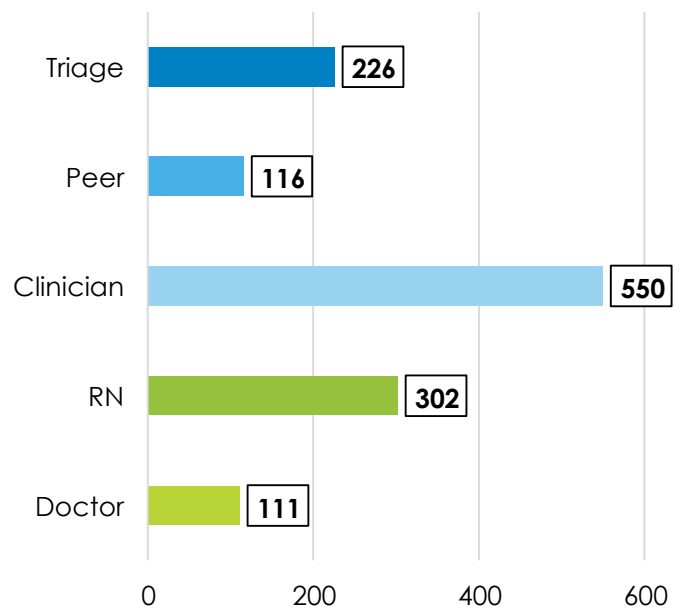


SERVICES

Services Provided by Position- All Referrals

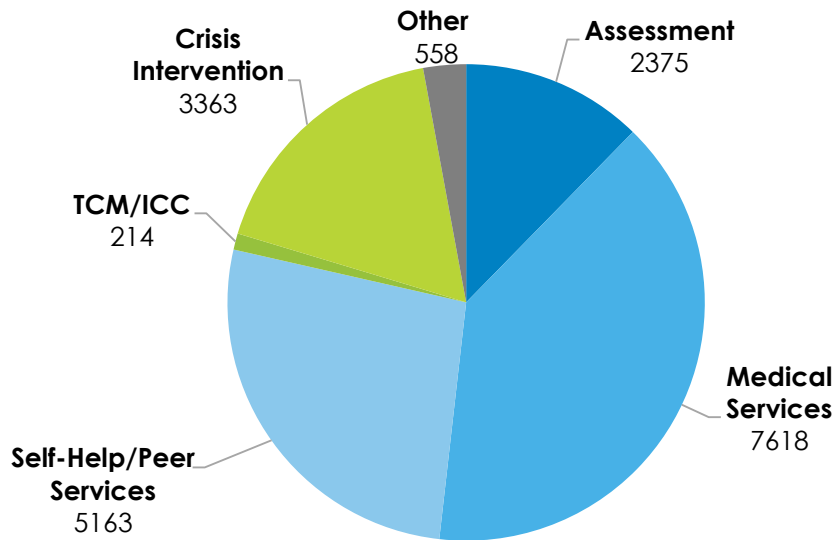


Services Provided by Position- Youth Referrals



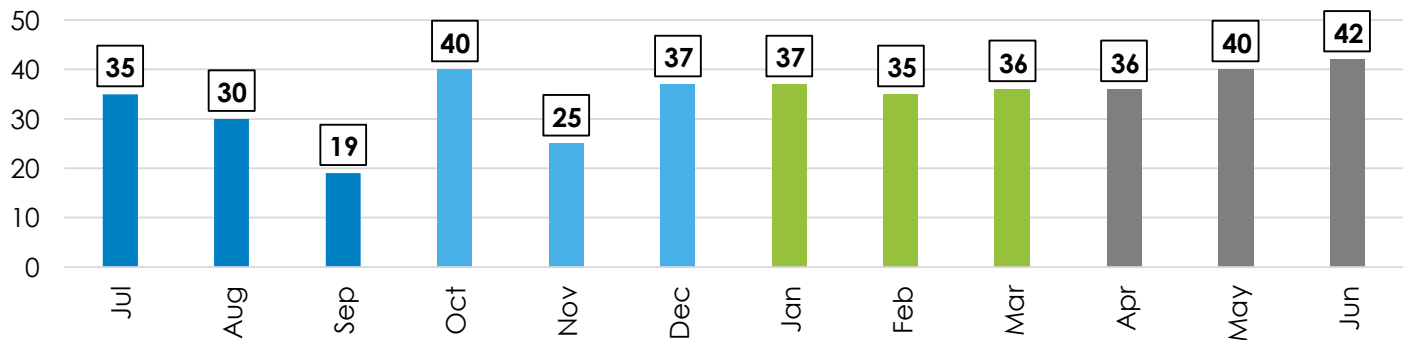
SERVICES (CONTINUED)

Services by Type- All Referrals



5150

Total 5150 Applications by Month



	#
5150 Discharge Locations	
AWOL	25
Kaiser (Morse & South)	11
Mercy (General & San Juan)	11
Methodist	5
Mental Health Treatment Center (ISU/IP)	204
Sutter	35
UC Davis	119
Unspecified Emergency Department	2
Total 5150 Applications	412

DISCHARGE REASONS

	#	%
Administrative discharge	1	0.02%
Client not appropriate for treatment	92	1.53%
Discharged against medical advice	8	0.13%
Disengaged from services/Non-compliant with treatment	212	3.53%
Never engaged in services	104	1.73%
Services no longer needed	408	6.79%
Successful completion	63	1.05%
Transfer to higher level of care	1617	26.92%
Transfer to lower level of care	898	14.95%
Transferred to a different program	2537	42.24%
Unknown/Not entered	66	1.10%
Total	6006	100.00%

This report was developed and distributed by
Turning Point Community Program's
Outcomes & Evaluation Department



A: 10850 Gold Center Drive, Suite 325, Rancho Cordova, CA 95670 P: (916) 364-8395 www.TPCP.org

 /TurningPointCP  @TurningPointCP

APPENDIX A
Referral Sources

	FY TOTAL
AOD Services	
Alcoholics Anonymous (AA)	2
Alpha Oaks	1
Clean and Sober Program	1
Cornerstone	1
Detox Center	1
Gateway	32
GLOM Substance Abuse Programs	1
Harm Reduction	1
Narcotics Anonymous (NA)	1
Palm House	1
Recovery Center/House/Home	12
Rehab	8
River City Recovery	51
Sacramento Recovery Home	4
Sober Living	5
System of Care	4
Treatment Facility	1
Wellspace A-House	6
Unspecified AOD Program	1
Community Services	
Attorney/Lawyer	7
Cal Aim	1
Cal Hope	1
Carmichael Resources	1
Church	1
Community Center	1
Community Health Worker/Support	3
Elk Grove City Service Worker	1
Exodus Project	6
Fire Department	2
Job Corps	28
MAS Social Services Foundation	4
Mental Health America	1
Morning Star	1
Next Door	3
Norcal Services for the Deaf	3
Peace Corps	1
Pride Event	1
Public Agency	2
Sac Community	1
The Bunker	1
Veteran's Administration	1
Volunteers of America	2
WEAVE	4
Wellness Community	2
World Relief	2
Crisis Services	
911	4
Ambulance	1
Crisis Receiving for Behavioral Health (CRHB)	3
Crisis Center	2

APPENDIX A
Referral Sources

	FY TOTAL
Crisis Services (continued)	
Crisis Counselor	1
Crisis Line	10
Crisis Residential Program	3
Community Wellness Response Team (CWRT)	16
Medical Intervention Crisis	1
Mobile Crisis Team	9
Suicide Watch	1
Triage Team	1
Developmental Services	
Alta Regional Center	3
Hands United	1
Independent Living Skills Agency/Worker	4
Positive Pathways	1
Federally Qualified Health Centers (FQHC)	
One Community Health	22
Peach Tree	2
Sacramento Native American Health Center	6
Wellspace	62
Homeless Services	
First Step	10
Gathering Inn	4
Homeless Engagement and Response Team (HEART)	2
Loaves & Fishes	1
Lutheran Social Services-Ending Homelessness	1
Mary's House	1
Meadowview Center	1
Next Move	1
Sacramento Steps Forward	1
Salvation Army	1
Shelter (Unspecified)	9
St. John's	3
Hotline/Helpline	
211	12
311	1
988	66
County Line	3
CRP Hotline	2
Hotline (Unspecified)	13
HUD Line	1
Suicide Hotline	5
Housing & Respite Services	
23-Hour Respite	1
Abiding Hope Respite House	1
Anderson Flouncy House	1
Group Home	1
Hope Crisis Respite	1
Hotel	1
Palm House	1
Room & Board	5
Respite (Unspecified)	3
Section 8	1
Sacramento Housing and Redevelopment Agency (SHRA)	1
Welcome Home	1
Unspecified Housing Program	4

APPENDIX A
Referral Sources

	FY TOTAL
Insurance	
ABC Medi-Cal	1
Aetna	1
Insurance (Unspecified)	6
Medi-Cal	3
Molina	2
Sedgwick	1
Medical Services/Urgent Care	
A+A Health Services	1
Advice Nurse	1
Agis Clinic	1
Clinic (Unspecified)	9
Community Health	1
Elk Grove Urgent Care	1
Elica Health Center	4
Fair Oaks Medical Urgent Care	2
Family Clinic	1
Health and Life Organization (HALO)	2
Health Clinic	1
Healthcare Service Worker	1
Medical Student	1
Neurologist	1
Nurse at Probation	1
Paramedics	1
Pharmacy (Unspecified)	3
Refugee Clinic	1
Rocklin Urgent Care	1
Sacramento Community Clinic	4
Sacramento County Health Center	2
Sacramento Urgent Care	1
Urgent Care (Unspecified)	69
West Sacramento Urgent Care	1
Willow Clinic	2
Older Adult Services	
Assisted Living	1
Care Homemaker	1
Other Mental Health Outpatient Provider	
AKUA Mental Health Treatment	1
Care/Service Coordinator (Unspecified)	6
Case Manager/Worker (Unspecified)	46
Capital Star	8
Clinician/Social Worker (Unspecified)	36
Counselor/Therapist (Unspecified)	116
Enhanced Care Management (ECM)	1
Intensive Outpatient Program (IOP)	3
Kaiser Therapist	1
Mental Health Program/Treatment (Unspecified)	16
North Valley Behavioral	1
Psychologist/Psychiatrist	27
Resource Manager	1
Stanford Therapist	1
Sutter Mental Health Plan	1
UC Davis Therapist	1
Wellness Center	1

APPENDIX A
Referral Sources

	FY TOTAL
Out of County	
Coloma Center TPCP	1
Fresno County	1
Los Angeles County	2
Placer County	4
San Jose Behavioral	1
Sonoma County Behavioral Health	1
Sutter Health Amador	1
Woodland Behavioral Health	1
Yolo County	1
Yuba Medi-Cal	1
Psychiatric Hospital	
Alpha Oaks	1
Crestwood	8
Heritage Oaks Hospital (HOH)	24
Sacramento Behavioral Health Hospital (SBHH)	2
Sierra Vista Hospital (SVH)	31
Sutter Center for Psychiatry	1
Unspecified Psychiatric Hospital	1
Sacramento County Mental Health Plan	
Asian Pacific Counseling Center (APCC)	3
Adult Psychiatric Support Services (APSS)	19
Bay Area Community Services (BACS)	71
Bridges	2
CORE	7
Crisis Residential Program	3
El Hogar	16
FIT Program	1
Heartland	9
Hope Cooperative	46
HRC	1
La Familia	11
Mental Health Plan (Unspecified)	2
Mental Health Treatment Center (MHTC)	21
River Oaks	2
Sacramento Behavioral/Mental Health	7
Sacramento Children's Home	1
Stanford Sierra Youth and Families	2
Star View Children and Family Services- The STAY	1
Telecare	4
Turning Point Community Programs	130
County and State Services	
ACCESS	23
Cal Works	1
Court	50
Child Protective Services	6
Department of Health Care Services (DHCS)	2
In-Home Support Services (IHSS)	1
Mental Health Diversion	4
Public Defender's Office	5
Sacramento County	45
State Office	1
Welfare Office	2